

**sincere.**

**BEST MANNEQUINS**





## 01.

**Mannequins  
general info**

p. 6

## 02.

**Female and male  
mannequins**

p. 8

## 03.

**Infant and kids  
mannequins**

p. 12

## 04.

**Fittings and  
customization**

p. 16

## 05.

**Female, male  
and kids busts**

p. 18

## 06.

**Head displays  
Trouser forms**

p. 25

*DISPLAY FORMS*  
*WITH STYLE AND*  
**SINCERITY**



The sincere collection brings window mannequins back to the essence: comfortable displaying, elegant poses and being easy to dress.

This collection is completed with a range of torsos, trousers forms and head displays. With an affordable entry to the market, this collection is accessible for all stores and brands.

# sincere. COLLECTION

Standard available in pure white with a matt finish and abstract egg-head.  
For bespoke colours and designs feel free to contact us.



PREMIUM FITTINGS



FIBER-REINFORCED POLYESTER



WHITE MAT PAINT



SCRATCH RESISTANT FINISH

## GENERAL SIZES

	FEMALE		MALE	
shoulders	40	cm	47	cm
chest	90	cm	101	cm
waist	66	cm	82	cm
hips	86	cm	92	cm
low hips	92	cm	104	cm
heel	2	cm	2	cm
clothes	36	EU	50	EU / L
shoes	38	EU	43	EU





SINFM001\_WH

height: 182 cm  
width: 46 cm  
depth: 26 cm



SINFM002\_WH

height: 181 cm  
width: 47 cm  
depth: 58 cm



SINFM003\_WH

height: 181 cm  
width: 54 cm  
depth: 31 cm





SINMM101\_WH

height: 189 cm  
width: 57 cm  
depth: 55 cm



SINMM102\_WH

height: 190 cm  
width: 53 cm  
depth: 30 cm





SINCM300\_WH

---

height: 31 cm  
width: 38 cm  
depth: 51 cm

12 months baby



SINCM302\_WH

---

height: 79 cm  
width: 26 cm  
depth: 24 cm

12 months baby



SINCM303\_WH

---

height: 117 cm  
width: 36 cm  
depth: 27 cm

ca. 6 y.o. unisex



SINCM304\_WH

---

height: 117 cm  
width: 38 cm  
depth: 37 cm

ca. 6 y.o. unisex



SINCM305\_WH

---

height: 142 cm  
width: 41 cm  
depth: 28 cm

ca. 10 y.o. unisex



#family #love

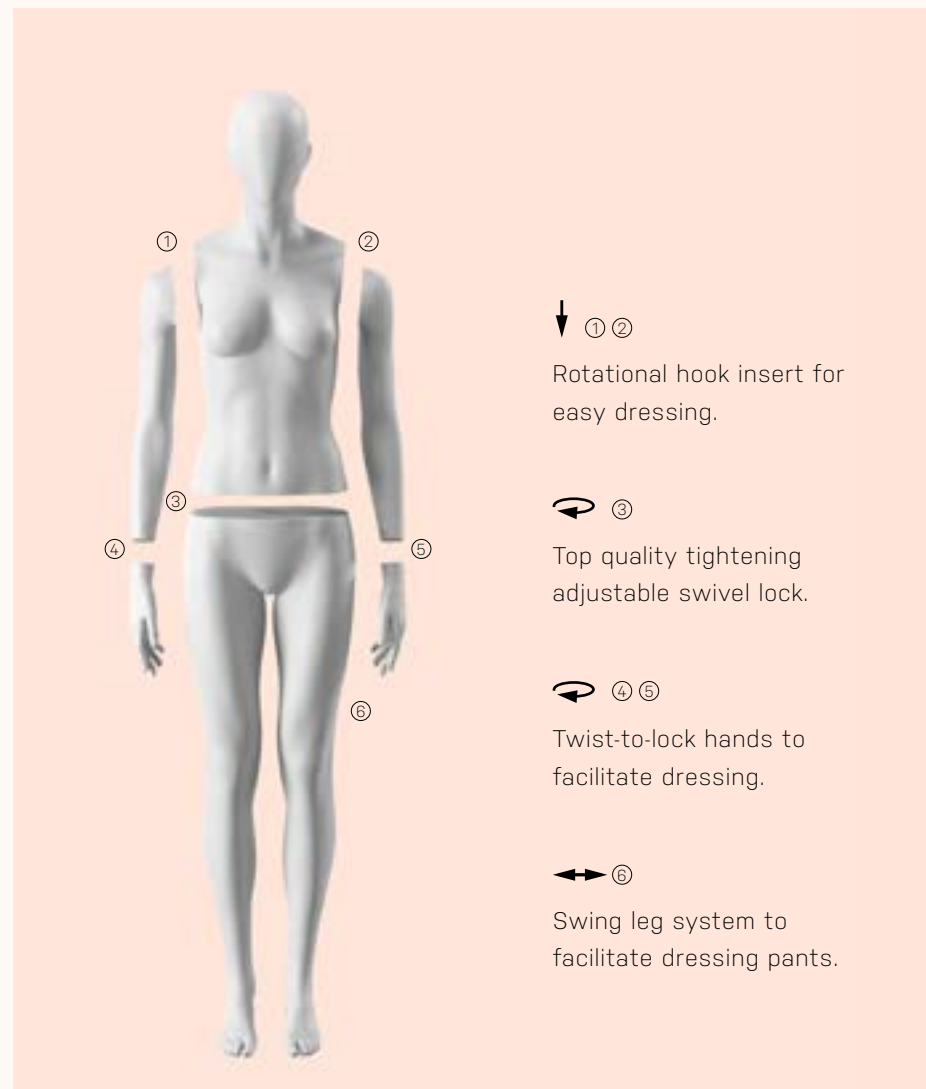
#sculpted #perfectfit



#abstractfaces #anonymous



# Fittings and customization



↓ ① ②  
Rotational hook insert for easy dressing.

↻ ③  
Top quality tightening adjustable swivel lock.

↻ ④ ⑤  
Twist-to-lock hands to facilitate dressing.

↔ ⑥  
Swing leg system to facilitate dressing pants.

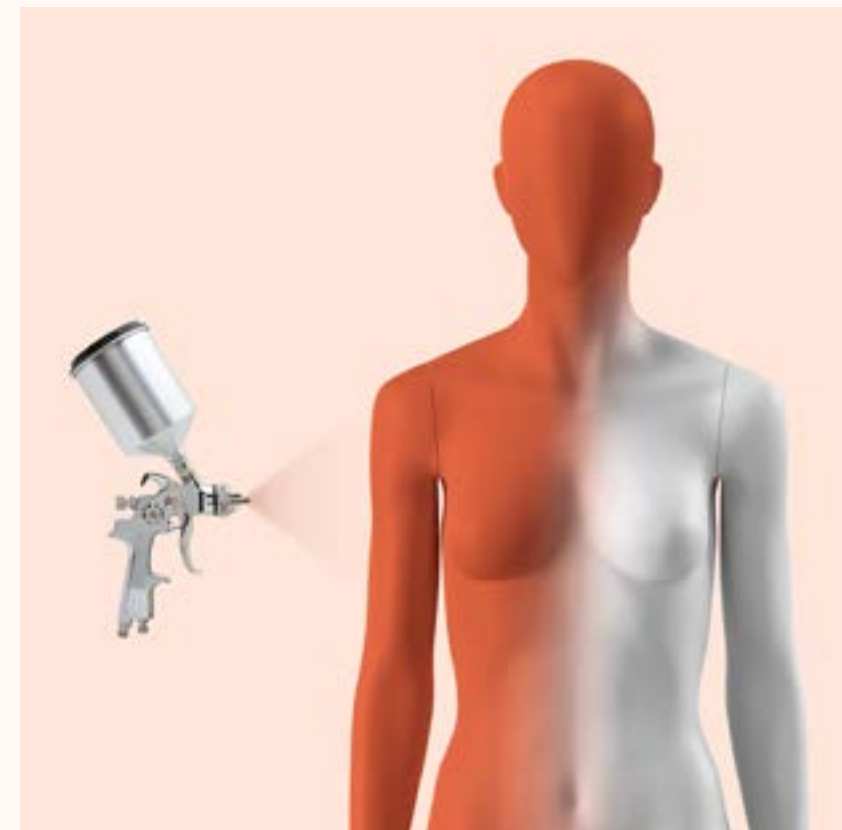


All compatible hands have the option to install a hand accessories pin. This pin is standard not included, but to be ordered separately.



Square metal base 40 x 40 cm with calfpin, powder coated white mat finish.

# Respray service



This collection comes standard in pure white with a mat finish. However, you can make use of our professional respray service starting from one piece and truly make SINCERE your own.

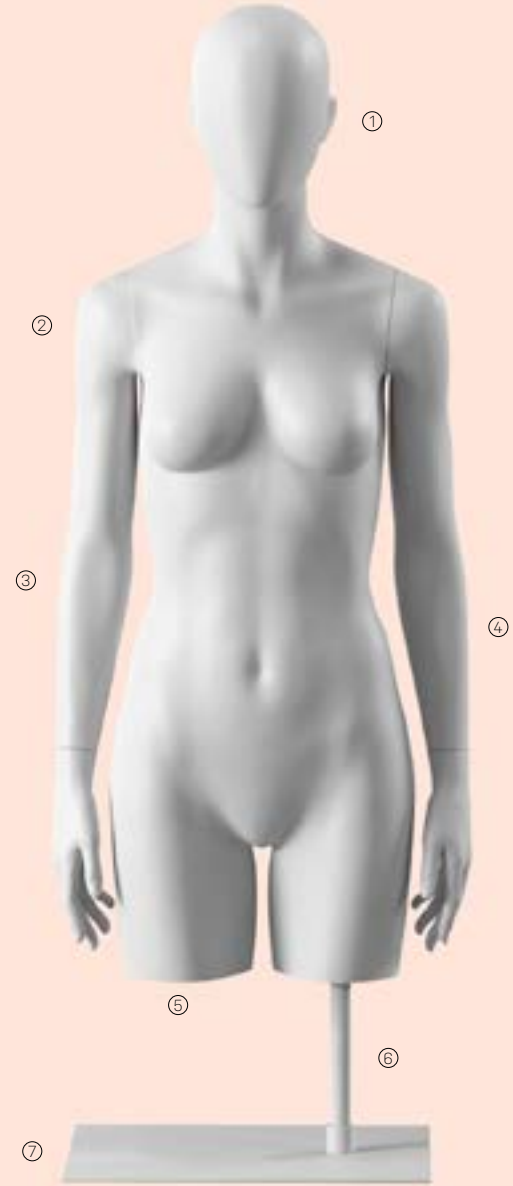
← CONTACT US FOR MORE INFO

# Custom pose



Our in-house 3D design studio is enthusiastically waiting to hear your creative ideas and sculpt your own custom pose. Small changes to our current offering or a new pose altogether, nothing is impossible.

← CONTACT US FOR MORE INFO



- ① Fixed abstract head
- ② Scratch resistant painted FRP
- ③ Sculpted for the perfect fit
- ④ Removable arms
- ⑤ Hollow legs to fit trousers inside
- ⑥ 40 CM upright included with all busts. Adjustable height.
- ⑦ Rectangular base 30x40 cm finished in powder coated white steel included with all adult busts.



SINFB053\_WH

height: 106 cm  
width: 46 cm  
depth: 26 cm



SINMB153\_WH

height: 114 cm  
width: 53 cm  
depth: 30 cm



SINFB051\_WH

height: 104 cm  
width: 46 cm  
depth: 25 cm



SINFB052\_WH

height: 104 cm  
width: 60 cm  
depth: 26 cm



SINMB152\_WH

height: 111 cm  
width: 53 cm  
depth: 29 cm



SINMB151\_WH

height: 111 cm  
width: 58 cm  
depth: 35 cm

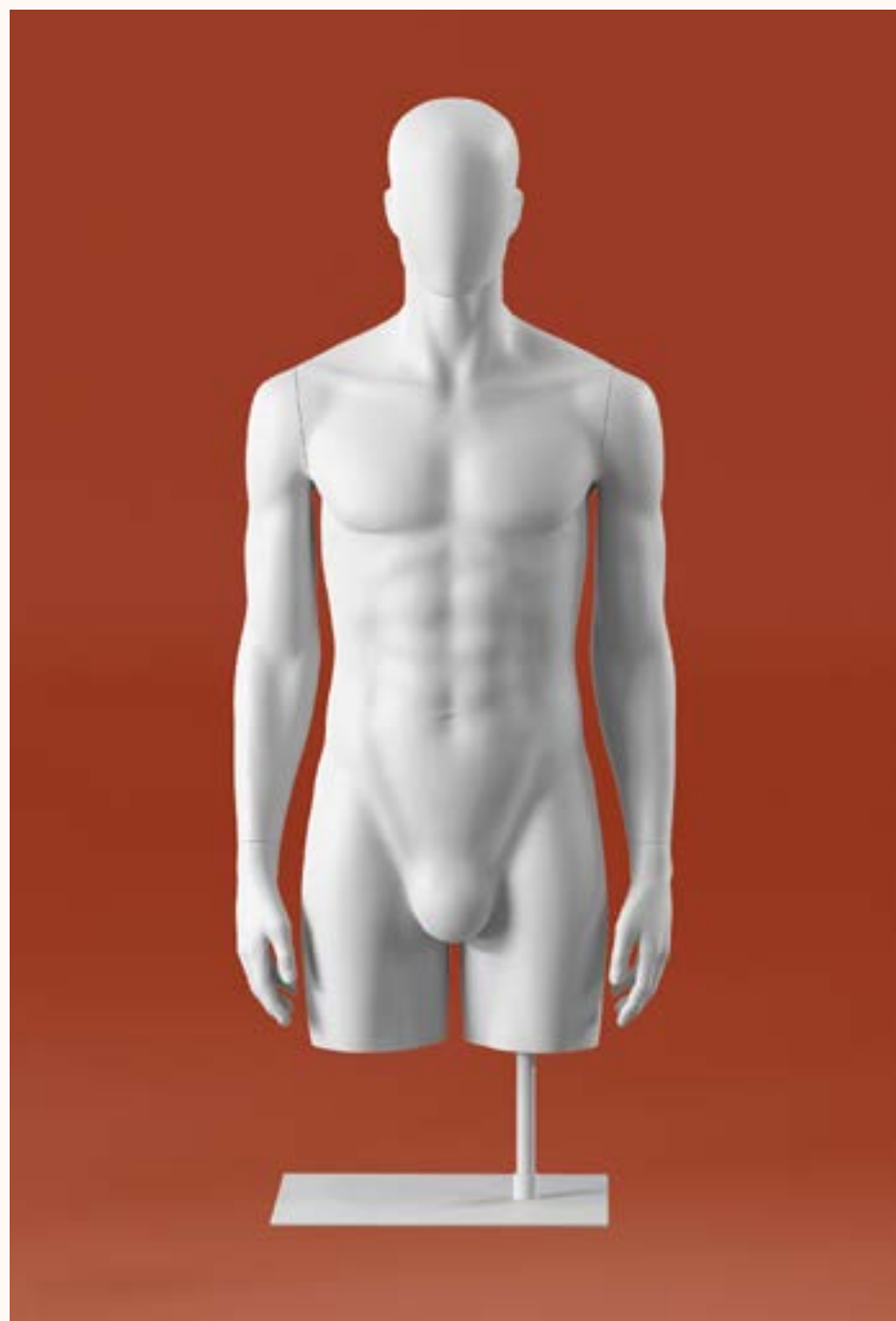


SINCB355\_WH

height: 72 cm  
width: 36 cm  
depth: 22 cm

ca. 6 y.o. unisex

base: 26x35 cm  
upright: 30 cm



A truly complete  
display collection





SINFH250\_WH

height: 44 cm  
width: 40 cm  
depth: 25 cm

Included 20x30 cm base with a 35 cm upright for table presentation.



SINMH251\_WH

height: 45 cm  
width: 48 cm  
depth: 28 cm

Included 20x30 cm base with a 35 cm upright for table presentation.



SINFL201\_WH

height: 106 cm  
width: 46 cm  
depth: 26 cm

White square base with calf-pin included.



SINML202\_WH

height: 114 cm  
width: 53 cm  
depth: 30 cm

White square base with calf-pin included.



# Trade benefits at a glance



## PREMIUM SERVICE

At Best Mannequins, you can count on a straightforward, personal and above all service-oriented approach.



## LARGE STOCK

95% of the collections offered in our online shop are available in stock. So most products can be picked up or shipped immediately upon ordering.



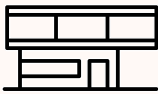
## 3D CUSTOM-MADE DESIGN

Best Mannequins has its in-house 3D SCAN & PRINT studio. Our experienced 3D sculptor will be glad to transform your ideas into 3D visuals. Custom-made prototyping is now faster than ever before.



## QUALITY AND RELIABILITY

At Best Mannequins there is a constant research for innovative and practical solutions which improve the functionality and durability of our products. We pioneer to offer you the most advanced fittings and best coatings on the market. Thanks to a rigorous quality control process, we achieve to guarantee you a consistent quality. Our sourcing knowhow allows us to produce at the most cost-efficient way so you can rely on us as a partner offering you the BEST quality/price ratio on the market.



## GRAND SHOWROOM

Get inspired in our grand showroom of 1500m<sup>2</sup>. This is where our collections are brought to life.



## WORLDWIDE SHIPMENT

Wherever your business or project is located on the globe, our logistic experts make sure your orders are delivered smoothly and without delays.



## EXCELLENT SERVICE

In our in-house workshop, we offer you quality refurbishment and repairs of display mannequins, forms and metal displays. For an affordable price, a professional respray service is offered.



## SUSTAINABILITY

Best Mannequins is actively taking steps to implement innovative production solutions which reduce the impact on the environment and/or improve the working conditions in its factories. Instead of the conventional fiber reinforced polyester, we stimulate several more planet friendly raw materials such as bio-resin and recyclable plastics. Our showroom is carbon neutral and we are constantly working on more sustainable solutions such as our respray and repair service to boost the longevity of our products.



# BEST MANNEQUINS

Splenterbeekstraat 2, 8710 Wielsbeke, Belgium

T +32 (0) 56 666 400

[www.bestmannequins.be](http://www.bestmannequins.be) | [sales@bestmannequins.be](mailto:sales@bestmannequins.be)